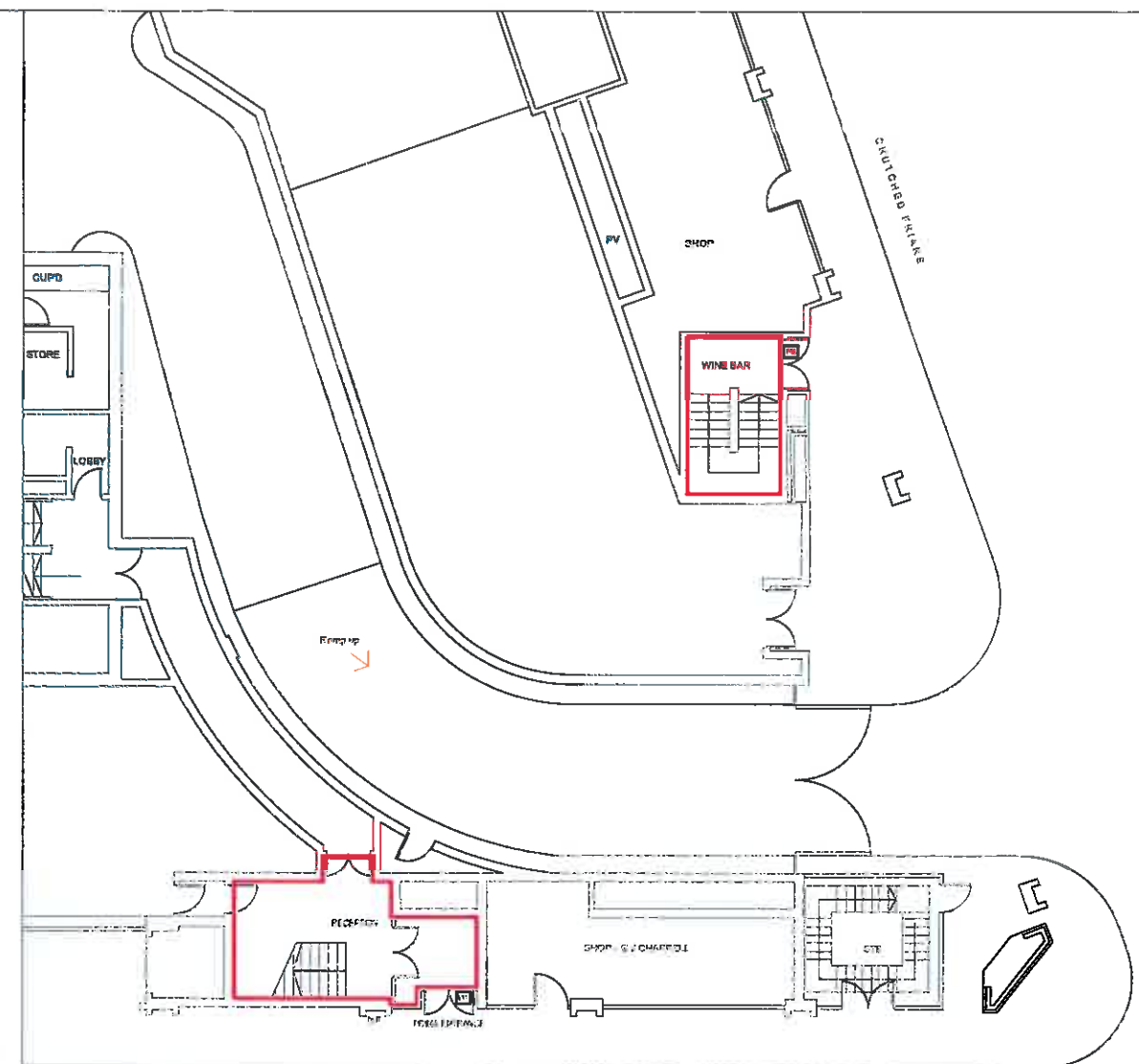


1st FLOOR PLAN  
SCALE 1:50



GROUND FLOOR PLAN  
SCALE 1:50

— AREA WHERE LICENSABLE ACTIVITIES WILL TAKE PLACE

**NOTE**

CONSUMPTION OF ALCOHOL AND LICENSABLE ACTIVITIES TAKE PLACE ANYWHERE WITHIN THE PREMISES. THE POSITION OF ANY LOOSE FURNITURE IS SHOWN FOR DIAGRAMMATIC PURPOSES ONLY. THE LOCATION OF FIRE EQUIPMENT IS SHOWN ON THE DATE HEREOF BUT MAY BE MOVED WITH THE CONSENT OF THE FIRE OFFICER.

**LEGEND**

**FIRE SIGNAGE**  
(EXACT LOCATION TO BE AGREED ON SITE)

- ILLUMINATED FIRE EXIT SIGN
- ILLUMINATED FIRE EXIT SIGN (DIRECTIONAL)
- FIRE DOOR KEEP LOCKED
- FIRE DOOR KEEP CLOSED
- FIRE DOOR KEEP LOCKED FAIL SAFE OPEN/DIGITAL CONTROL
- FIRE ESCAPE KEEP CLEAR

**DOOR TYPE KEY**

- FD30S
- FD60S
- FD30
- FD60
- STANDARD NON-RATED DOOR DOORS WHICH ARE PROVIDED WITH PANIC BOLTS. THERE MUST BE A NOTICE ADJACENT TO FASTENING INDICATING METHOD OF OPENING (MIN.50MM HIGH LETTERING)

AREA COVERED WITH A SYSTEM OF ESCAPE LIGHTING THAT WILL ILLUMINATE THE AREA UPON FAILURE OF THE NORMAL LIGHTING POWER SUPPLY TO A SUFFICIENT STANDARD TO ENABLE PERSONS TO LEAVE THE AREA SAFELY. THE ESCAPE LIGHTING SYSTEM SHOULD CONFORM TO THE BRITISH STANDARD CURRENT AT THE TIME OF ITS INSTALLATION AND A CERTIFICATE TO THIS EFFECT KEPT WITH THE FIRE CERTIFICATE.

**FIRE SAFETY EQUIPMENT**  
(EXACT LOCATION TO BE AGREED ON SITE)

- FIRE EXTINGUISHER - DRY POWDER
- FIRE EXTINGUISHER - CARBON DIOXIDE
- FIRE EXTINGUISHER - WATER
- FIRE EXTINGUISHER - MULTI PURPOSE
- FIRE BLANKET

- AUTOMATIC SMOKE DETECTOR
- AUTOMATIC HEAT DETECTOR
- COMBINED AUTOMATIC HEAT/SMOKE DETECTOR
- FIRE ALARM CALL POINT
- AUDIBLE WARNING DEVICE



**TIBBATT'S ABEL**

Interiors Architecture

**Harper's New London Street**  
23.08.2016  
1:50 @ A1  
AL  
1749

1749-016